



Lyon Park Citizen

April 2021

Lyon Park's listserv, located on NextDoor, is a secure, private social network and an easy way for neighbors to connect and share information. It's free.

Lyon Park neighbors use this app and/or website to:

- Follow fox updates
- Find an advocacy attorney
- Ask for advice about creep-crawlies
- Locate a lost package!

=

Join here:

www.nextdoor.com/join

Code: SBCFNC

April Meeting

April 14, 2020

<https://zoom.us/join>
Meeting ID: 871 7118 4392
Passcode: volunteer

Log in as early as 7 PM to make sure your system works and to engage in some small talk. Agenda items begin promptly at 7:30.

President's Message

T.S. Eliot opened his modernist masterpiece *The Waste Land* by stating, "April is the cruellest month..." These words, written in wake of the last global pandemic, the misnamed Spanish Flu, finally make sense to me. It seems incredibly cruel that, despite the progress made over the past year in combating the current pandemic, we are still unable to fully enjoy socializing with our friends and neighbors, especially at the community events, such as the annual Spring Fair, that help make Lyon Park a great place to live.

Although Eliot's poem is, on the whole, dark, it does offer some cause for hope. And I am hopeful that we will soon see a greater return to "normalcy" in our community. I am planning for the May meeting of the Lyon Park Citizens Association to be held in person, outdoors in our community park. We are also thinking about staging one of our ever-popular food truck festivals in the coming months. As vaccinations become more widespread, even more in-person events will be possible.

Of course, community-building events don't have to be in person, as Christa Abbott has demonstrated in her role as the LPCA's coordinator for Dialogues on Race and Equality, a county-run initiative aimed at addressing racial equality in Arlington and reducing disparities. Most recently, she has worked with her counterparts in the Glencarlyn Citizen's Association to arrange for a virtual talk by Wilma Jones, activist and author of *My Halls Hill Family, More than a Neighborhood*, which explores one of the county's historically African-American communities. The talk will take place on Thursday, May 13. (The exact time has yet to be set.) The Zoom link will be posted on the LPCA website, www.lyonpark.org.

The next LPCA meeting is Wednesday, April 14. I hope to see you there. Stay healthy, stay strong.

Peter Zirnite, LPCA President

**Please pay your
LPCA dues!
The form is on page 11.**

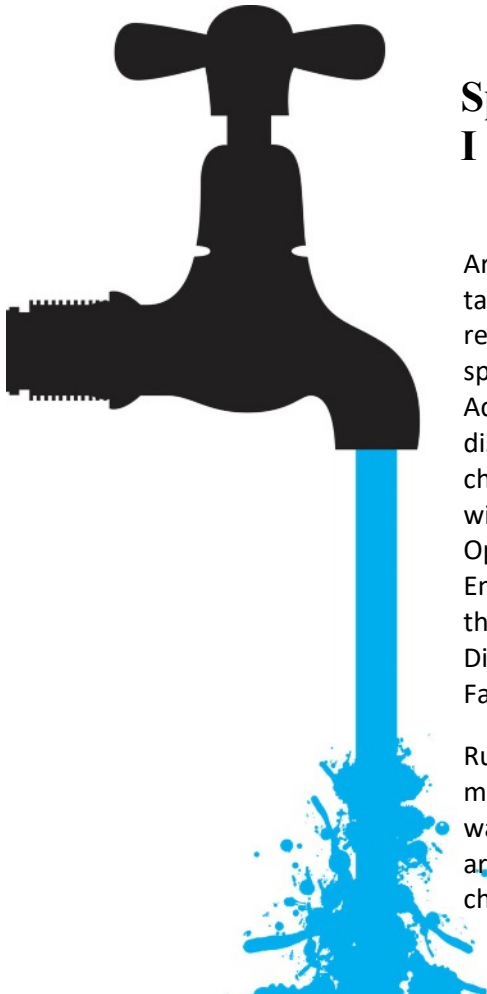
Classified Ads

GET SOMEONE'S ATTENTION! The *Citizen* is hand delivered to 1,900 households every issue.

TEEN SERVICES

Interested in including your free teen ad? Visit www.lyonpark.org/library to share your information!

- **Abby Kant**, 15, babysitter, dog walker/sitter, odd jobs, plant sitter. **Text:** (703) 626-4531
- **Max Kiriakou**, 15, yard work, shoveling, lawn mowing, trimming, yard work. I have my own equipment! **Phone/Text:** (571) 244-8982
- **Kate Kiriakou**, 14, Babysitter, mother's helper, odd jobs, plant sitter. Red Cross certified. **Phone/Text:** (703) 587-9277
- **Delaney Loughney**, 13, Babysitter, odd jobs, plant sitter, dog walker, pet sitting.. **Text:** (571) 458-0512
- **Finn Loughney**, 16, Odd jobs, dog walker, plant sitter, shoveling. **Text:** (571) 289-4823
Email: finnloughney@gmail.com
- **Mae Seward**, 13, babysitter, mother's helper. Red Cross certified. Available Fridays after 3 PM and Saturdays and Sundays after 12 PM. Phone/text (703) 473-3378.
- **Sylvia Goldener**, 13, babysitter, mother's helper, plant sitter, odd jobs. Text/Email: (703) 401-7234 sylviagoldener@icloud.com, Red Cross certified
- **Ella Bomberger**, 15, babysitter, mother's helper, dog walker, plant sitter. Text: (571) 775-9205. Red Cross babysitting certification
- **Morgan Thomas**, 12, experienced dog walker, plant sitter. Text: (240) 810-4834.



Splish Splash, I Was Taking a Bath!

Arlington's Drinking water may smell and taste slightly different right now as the regional supply system undergoes annual spring cleaning. The Washington Aqueduct began the temporary disinfectant switch from chloramine to chlorine on Monday, March 7. The switch will continue through Monday, May 2. Operated by the U.S. Army Corps of Engineers, the Washington Aqueduct is the wholesale supplier for Arlington, the District of Columbia, and northeastern Fairfax.

Running the cold water tap for about two minutes, using water filters, and letting water sit in a container in the refrigerator are generally effective for removing chlorine taste and odor.

The Lyon Park Citizens Association
P.O. Box 100191, Arlington, VA 22201

LPCA EXECUTIVE COMMITTEE

President

Peter Zirnite
LyonParkPresident@gmail.com

Vice-President/Neighborhood Conservation

Thora Colot
thora.colot@gmail.com

Vice-President/Development

Aaron Schuetz
ajschuetz@yahoo.com

Vice President, Communications/Social Media

Sky Adler
sky.x.adler@gmail.com

Treasurer

Bill Anhut, Jr. (703) 528-3665
billanhut@yahoo.com

Secretary/Historian

Annemaries Selvitelli
astanz10@hotmail.com

Membership Chair

Darcy Rosenbaum
darcy.rosenbaum@gmail.com

Sargeant at Arms

John Goldener
goldener@gmail.com

Member at Large

Julia Young
juliayoung@gmail.com
Paul Showalter
lockport00@comcast.net

COMMUNITY CENTER

BOARD OF GOVERNORS

Jeannette Wick, Chair (703) 524-8531
jywickrph@aol.com

IMPORTANT CONTACTS

Community Center Rental Agent

Cindy Stroup (703) 527-9520
rent@lyonpark.info

Clarendon Alliance Representative

Debbie Kaplan
debbiekaplandk@gmail.com

Civic Federation Reps

Steve Geiger (703) 522-0026
Larry Juneer (703) 525-8921
Natalie Roy (703) 819-4915
Jim Turpin (703) 248-6988

Doorways for Women and Families Liaison

Saif Amin saiful.amin@gmail.com

Newsletter Editor

Elaine Simmons
Jeannette Wick

Submissions

Send photos and articles to
lyonparkeditor@gmail.com

Distribution

Helen White (703) 472-1076
hmwhite3@gmail.com



Watch for more information on Next Door and in the May LP Newsletter!

Visit the Garden Group's Plant Sale at the Community House!

You'll find a remarkable selection of plants and other garden-related items at reasonable prices.

And, knowledgeable neighbors will be available to answer your questions.



Did Someone Say “EEK”?

Heidi Ananthakrishnan

I ran into a new neighbor last summer while removing invasive plants at Fillmore Park.

I was crouching close to the ground to cut a thick root when a shiny grey and red body slowly slid by below the leaf litter. I figured it was a centipede or worm, but did a double-take when I saw a “hand” with four splayed fingers and then four skinny, cartoonish legs. Astounded, I leaned forward until I could smell the loamy soil.

Only then did two shiny salamander eyes take shape in the dark, seeming to ask, “What are you doing down here?” Funny, because that’s exactly what I was wondering about it.

How could an amphibian that breathes through its skin be living in a forest with no water source? It turns out native Eastern red-backed salamanders make their home under damp leaves and logs. The iNaturalist nature identification app shows almost all Arlington salamander sightings near water sources, but this was the first sighting recorded in the Lyon Park area.

Perhaps they are a relic of a riparian landscape; a creek ran through Fillmore Park before it was routed to below-ground pipes decades ago. If so, these salamanders could have inhabited this patch of land for millennia, which would make us seem like the new neighbors.

Leave it to a small amphibian to remind us of our place in this world.



Still the #1 Remodeling Contractor in Arlington

Pulling more permits in Arlington than any other contractor



Specializing in Arlington Homes

GET A FREE QUOTE TODAY

703-536-0900 | CookBros.org



Three birthday boys are pictured above. Two just turned seven. The other fellow has a seven in his age, too! Actually, two!
HAPPY BIRTHDAY!!!



Sights Around Lyon Park

The fellow to the left is departing on his own as spring moves in. The house to the left shows that one doesn't need a parade to celebrate Mardi Gras.

Below left, the recent ice storm bejeweled vines. Below right is a collection of large paper handle bags on the Showalter's porch. They've been taken to the Food Pantry so they can be filled and distributed.



Advertise in The Lyon Park Citizen

The Lyon Park Citizen is hand delivered to 1,900 homes around the 10th of the month from September through June (10 issues), with artwork and copy due the 20th of the previous month. These are our advertising rates:

Ad size	Measures (In inches)...	Cost
Business card	3.5 by 2.3	\$85/month color \$59/month B&W
Quarter page	3.5 by 4.5	\$130/month color \$89/month B&W
Half page	7.5 by 4.5	\$210/month color \$149/month B&W
Full page	7.5 by 9.5	\$350/month color \$249/month B&W
Full page free-standing insert	8.5 by 11	\$450/month color \$400/month B&W

We offer a 5% discount for residents who have paid their LPCA dues, and an additional 10% discount for advertisers who commit to three or more months in a row. A designer will draft artwork for an extra 10% charge. Contact lyonparkeditor@gmail.com to reserve space.



More Graffiti at Lyon Park

Our park wasn't built in a bubble
With a moat or walls that are double
So sorry to say
That in the process of play
Some park-goers have created some trouble!

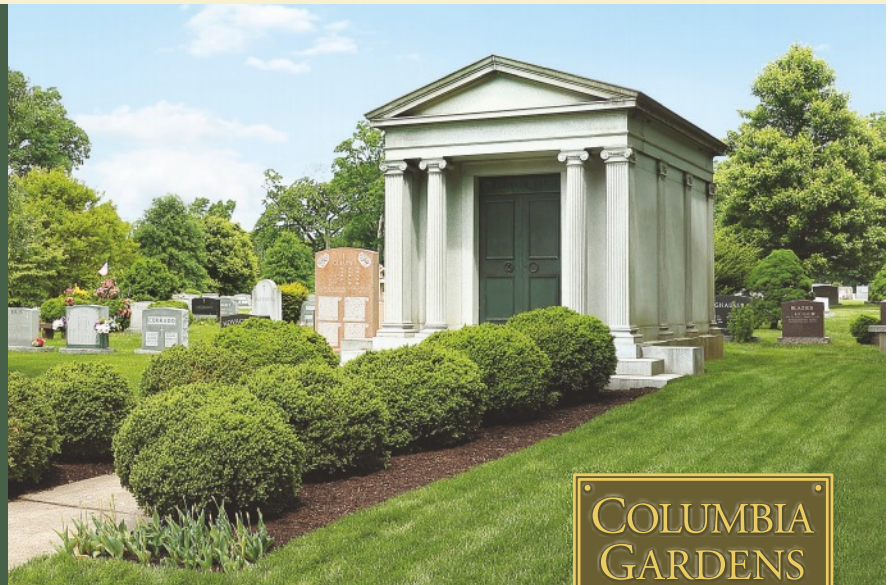
Writing graffiti on stucco makes an impression
The scratching can make a deep depression
This can't be removed
Or its authorship proved
Did you happen to observe the naughty commission?

Please take pride in our park. If you observe mischief makers defacing property, disrespecting our trees, or littering, please speak up or call the police.

Pre-Planning Gives You and Your Family Peace of Mind



Planning ahead for funeral and burial arrangements relieves your family of the burden of having to make decisions at a stressful time. Pre-planning is a true gift of love for your family—both emotionally and financially. Columbia Gardens Cemetery is approved by the State of Virginia to accept pre-payment for funeral and burial services. If you have not yet decided what arrangements you would like, we are here to guide and support you. We will explain burial, cremation, memorialization, options for funeral services and more.



ESTABLISHED 1917

For More Information, Please Contact Us at 703.527.1235

3411 Arlington Blvd. | Arlington, VA 22201 | columbiagardenscemetery.org



Community House Rental Rates

Lyon Park and Ashton Heights residents are eligible for resident rates, but cannot sponsor non-resident events.

Monday – Thursday (8 AM–5 PM, 4 hour minimum)

<75 guests, \$50/hour resident; \$100/hour non-resident

≥75 guests, \$75/hour resident; \$100/hour non-resident

Monday – Thursday evening (6–10 PM)

<75 guests, \$200 resident; \$400 non-resident

≥75 guests, \$300 resident; \$400 non-resident

Friday, Saturday, Sunday, Holidays

HALF DAY (8 AM–2:30 PM or 3:30–10 PM):

\$400 resident; \$900 non-resident

WHOLE DAY (8 AM–10 PM):

\$750 resident; \$1,600 non-resident

Children's Birthday Rates for children 10 and under, maximum 40 attendees, booked <2 months in advance:

Four consecutive hours ending before 2 PM, small kitchen use only– Includes the time you will need to set up and clean up.

\$200 resident; \$400 non-resident

Grounds preservation fees:

- \$30/inflatable (can only be rented from Arlington TEAM)
- \$100/floored tent, \$30/pole tent
- \$100 grounds fee for ponies and petting zoos

Use of inflatables and/or tents must be approved in advance and specified in rental contract.

A security deposit is required for all rentals.

MAKE A RESERVATION TODAY!

Check online calendar for availability and complete the online reservation form at www.lyonpark.info



Find news and more pictures on Facebook at <https://www.facebook.com/lyonparkcommunitycenter>



Sneak Peek: Turkey Trot Tee

Thanks to Evelyn and Emily, Design Powers, and Pastor Billy, the 2021 Turkey Trot tee design is pictured above. The design combines Christ Church's award winning design from 2017, as voted by last year's trotters and 2020's Major Tom. If all goes well, the annual Turkey Trot will run live on Thanksgiving Day. Mid Atlantic Drones will film the event from above.

**TROY'S ITALIAN KITCHEN
INVITES YOU TO OUR**

**SECOND ANNIVERSARY
FUNDRAISING EVENT**

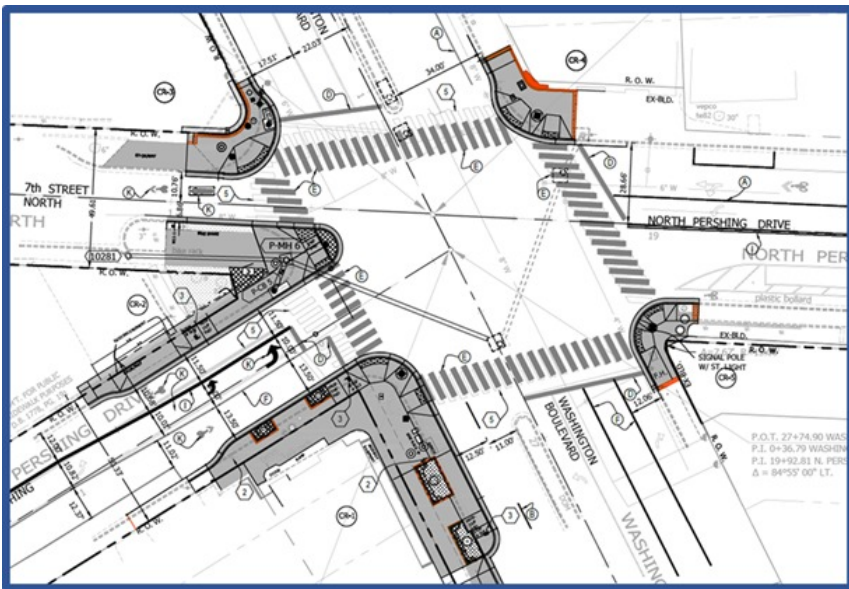


The pandemic has been rough on everyone.
But Troy's supporters within the Arlington Community
have been such a blessing to us.

To show our appreciation on our second anniversary,
we will be donating a portion of our proceeds from all orders placed
on **Friday, May 7, 2021**
to AFAC and the Lyon Park Community Center.







Pershing & Washington: Facelift Coming

On March 20, the Arlington County Board approved nearly \$1 million to improve the intersection at N. Pershing Drive and Washington Blvd. The proposed improvements are an adjacent and related project to the current phase of Pershing Drive Complete Streets Improvements. Four other nearby intersections along N. Pershing Drive were approved for “Complete Streets” pedestrian safety upgrades last year.

The busy intersection central to our Lyon Park neighborhood has no accessible curb ramps. Its narrow sidewalks, long crossings, and outdated bus stops can create hair-raising experiences for people who navigate the intersection by foot or on bikes. It’s not a picnic for vehicles, either.

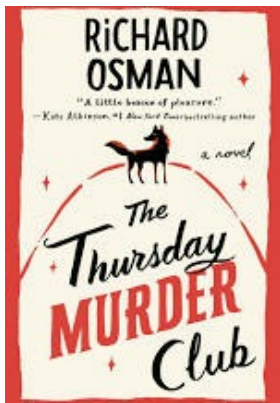
The Virginia Department of Transportation, Northern Virginia Transportation Authority is partially funding this project with grants, with the remainder of necessary funding coming from the County’s Capital Projects Fund.

The County is beginning the presconstruction activities to ensure everyone is on the same page. Construction is expected to start early this summer.

For information about this project and the entire Pershing Drive Complete Streets Project, go to this site: <https://projects.arlingtonva.us/projects/pershing-drive-complete-street-improvements/>. It describes upcoming intersection work.

The Thursday Murder Club

Margaret Dean



Quite a charming book located in a charming residential retirement community replete with charming elderly sleuths: Ron, an infamous former socialist firebrand; Joyce, a widow alert to social possibilities; Ibrahim, a former therapist with a good understanding of the darker elements of human behavior; and, finally, Elizabeth who has a background (probably from the second world war) that she is reluctant to share with her friends.

The murders of course were not charming. Bashing in a head never is, but perhaps in this instance murder was deserved. The Thursday Murder group had coalesced around meeting every Thursday to discuss cold cases, none of which they solved, but which had the advantage of keeping their wits sharp and their brains engaged. Their foursome also was more than ready to engage when a real murder happened in their community.

First the four made friends with Donna and Chris, two under-utilized policemen, and they build from there. The trail of responsibility and misdirection entangles the six sleuths in a web of confused accusations and a hint of romance. The second murder (of the person who until then had been their primary suspect) cuts short some of their speculation and forces them to rethink relationships in their small community. The team succeeds in solving both murders by unearthing old relationships and their unexpected ties to each other.

This debut novel for Osman reads quickly and easily, each chapter the thoughts and activities of one participant. The end is not obvious but a close reader might solve the mystery. As important is the hint on the last page that this might become a series "Talking of Elizabeth, she rang me earlier to tell me that someone slid a very interesting note under her door...." Enjoy.

The Thursday Murder Club, a novel, by Richard Osman, Pamela Dorman Books/Viking. 2020. London. ISBN 978-1-9848-80963 (hardcover), 351 pp, birthday present.

Tree Hater: Arlington's Invasive Species

Although Lyon Park's Bill Anhut encourages us to love trees, three plentiful species are less-than-lovable. Fast growing Tree-of-Heaven (AKA Chi-nese sumac and stinking sumac) is one of few trees considered invasive globally. A gardener in Philadelphia, PA, introduced Tree-of-Heaven to America in 1784 from China, and mature trees are now found all over the continental US. Some exceed 80 feet in height. Tree-of-Heaven's leaves resemble sumac: up to four feet in length, with 11 to 25 smaller leaflets alternating along the stems. In late spring, clusters of small, yellow-green flowers appear near the branch tips. Female trees produce seeds in late summer to early fall, in flat, twisted, papery structures called samaras. All parts of the tree, especially the flowers, have a strong, offensive, almost nutty odor. Tree-of-heaven not only overruns native vegetation, it prevents other plant species from growing. The root system can penetrate and damage sewers, infiltrate foundations, and lift sidewalks. Betty Smith based the book "A Tree Grows in Brooklyn," on this pest. Chopping down the tree is futile, because stumps rapidly sprout suckers and new growth.

Paper mulberry, a deciduous tree with milky sap, grows to a maximum of 45 feet. Its bark is tan and smooth to moderately furrowed, the wood is soft but brittle, and its leaves are lobed or mitten-shaped. Leaves are alternate, opposite or whorled along the stem. This tree fruits in summer; its reddish purple berries stain pavement, footwear, and flooring. Because of its shallow root system, paper mulberry trees often topple during high winds.

Silk tree (AKA mimosa or silky acacia) can grow to 40 feet. Silk tree's fern-like leaves are finely divided, five to eight inches long and three to four inches wide, and alternate along the stems. Its fragrant pink flowers look like pom-poms arranged in clusters at branch ends. It develops flat, straw-colored pods about six inches long containing light brown oval-shaped seeds that ripen from August to September. Pods begin to disintegrate, but remain on the trees into winter. Silk trees grow heartily in a variety of soils, re-sprout when damaged, and hog sunlight and nutrients. Silk tree prefers full sun. Its seeds' impermeable coat gives them a long "shelf life"—90% of seeds are viable after five years and some remain viable for 50 years.

MANAGEMENT OPTIONS

Use google images to find picture of these problem plants!

- Pull or dig young seedlings, preferably when soil is moist. Unless the entire plant including all roots and fragments is pulled, these trees will certainly re-grow. Repeated cutting can exhaust the plants reserves and may be successful if continued for many years or in areas of heavy shade.
- Systemic herbicides seem to be the most effective method of control. It is relatively easy to kill the above ground portion of these trees, but unless you kill or cripple the root system to prevent or limit stump sprouting and root suckering, the trees will return. Be careful when using herbicides.
- Eliminating these trees requires diligence, monitoring, and re-treatment as soon as they return. A thick cover of trees (preferably native and non-invasive) or grass sod helps.

Rise Early or Stroll Late: Red Foxes

Many Lyon Park residents have seen red foxes recently. Red foxes are found in most of North America, except parts of Canada and the southwestern United States. They are not native. In the mid-18th century, landowners imported red foxes from England and released them in New York, New Jersey, Maryland, Delaware, and Virginia. Our red fox populations are hybrids of imported and native species.

- Red foxes live in a variety of habitats, including woodlands, farmland, pastures, and brush. They adapt to diverse urban and suburban environments. They are active day and night, but most active at dusk or dawn. Although urbanized and considered sly and cunning, they are actually wary of people.
- These small, doglike animals are known for their red color, but their undercoat is white. The backs of the ears, lower legs and feet are black. They go through several color phases other than red, including silver and cross. The silver phase is almost completely black with silver tipped hairs. The cross phase is reddish brown with a dark cross on the shoulders. Red foxes in all color phases have white-tipped tails.
- Foxes hear low-frequency sounds best, unlike most mammals. The fox listens, for example, for small mammals' under-ground digging, gnawing, and rustling. When it hears them, it digs into the soil or snow frenetically to capture the animal.
- The red fox also stalks its prey like cats do. It hunts large quarry like rabbits by getting as close as possible, and then running the prey down when it flees. Foxes hunt even when full, and cache excess food under snow, leaves, or soft dirt.
- Foxes often smell like skunks, especially during courtship when males and females establish territories by scent marking.
- Foxes create maternity dens, usually in sparse ground cover with a view of surrounding area. At seven months, kits are ready to leave. The males tend to travel, while the females stay closer.
- Rabies, mange, and distemper can occur in fox populations.

Foxes live throughout Lyon Park. They are harmless unless they are handled or rabid (which is very rare; no cases of fox-human transmission of rabies have ever been reported). Having a red fox on your property is a privilege—they'll eat rodents and entertain you. Most backyard foxes are just taking a short cut. If you don't want them around, be certain that trash can lids fit tightly, never put meat scraps into a compost pile, and keep pet food inside.

Fast Facts: The Urban Red Fox

Adult weight: 12 to 18 pounds

Winter diet: Primarily small mammals

Summer diet: Primarily insects and berries

All-the-time diet: Road kill and carrion

Running speed: Up 30 miles per hour

Jumping height: 6 feet

SAMSON PROPERTIES



47 Lee Hwy Suite A
Arlington, VA 222017

Cell: 703-598-2785

571-677-2566

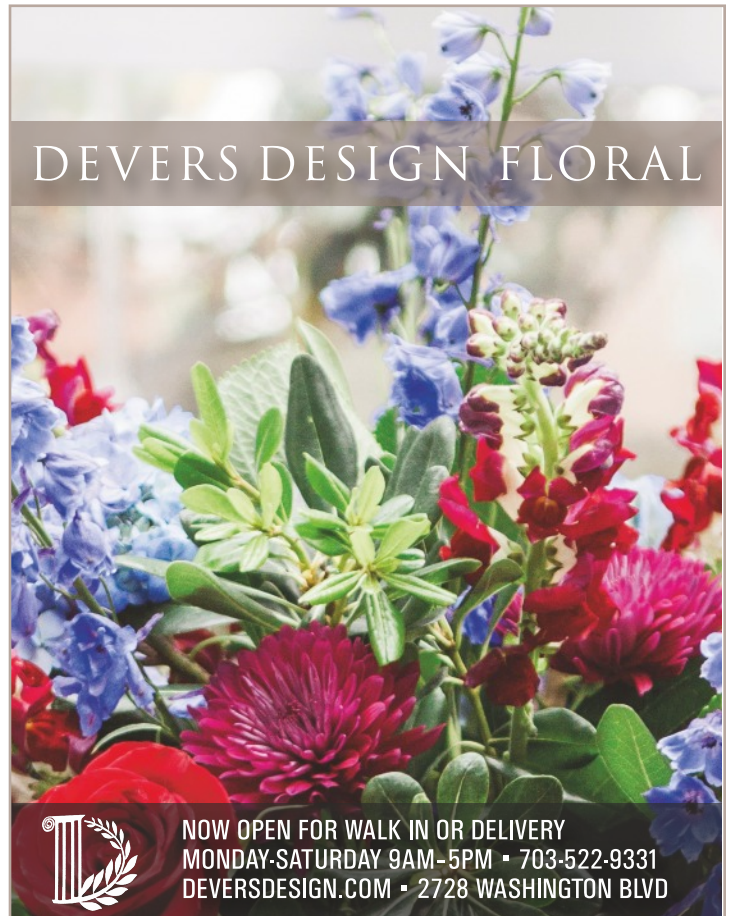
homepaige4u@gmail.com

paigekelloggretor.com

Licensed in VA



DEVERS DESIGN FLORAL



NOW OPEN FOR WALK IN OR DELIVERY
MONDAY-SATURDAY 9AM-5PM • 703-522-9331
DEVERSDSIGN.COM • 2728 WASHINGTON BLVD

AmazonSmile



AmazonSmile is an Amazon program that donates 0.5% of the purchase price of eligible products to charitable organizations. AmazonSmile is a simple, automatic way for you to support Lyon Park Community Center (LPCC) every time you shop, at no cost to you. When you shop at smile.amazon.com, you'll find the exact same low prices, vast selection and convenient shopping experience as Amazon.com. Go to smile.amazon.com from the web browser on your computer or mobile device. Select LPCC as your charity and then start shopping. It's that easy. You may also want to add a bookmark to smile.amazon.com.

iGive



iGive works similarly. It's free. iGive partners with more than 1,700 online stores. It donates an average of 3% what you spend to your selected charity. The stores pay for it all. You never pay more, and often you pay less with coupons and deals. A typical shopper raises more than \$100/year. Go to igive.com from the web browser on your computer or mobile device. Select LPCC as your charity and add the iGive button. This automatically tells participating stores that you want your shopping to support LPCC. You can also download the iPhone/iPad or Android apps.



Sometimes Cute. Sometimes Dangerous.

Recently, the County received several reports of sick and/or deceased raccoons. Subsequently, the County says six raccoons tested positive for Canine Distemper and one raccoon tested positive for rabies.

Distemper is a viral disease that is always present in wildlife populations at varying levels. This virus does not affect humans. The disease is transmitted when animals have direct contact with infected animals or indirect contact with body fluids/feces from an infected animal.

The County is asking resident to

- Ensure pets are up to date on their rabies and distemper vaccines
- Keep dogs on a leash at all times and keep cats inside
- Do not approach or feed any wild animals
- Feed pets inside
- Remove wildlife attractants from yards, such as unsecured garbage cans, open containers of food and compost
- If you see a raccoon that appears sick, lethargic, disoriented, or aggressive should stay away from the animal and call Animal Control immediately at 703-931-9241. If you come across a dead raccoon in your yard or a public space, contact Animal Control immediately.

Please Pay Your LPCA Dues!

\$10/year, \$20/two years, \$250 for life

Please complete this form (Hint: use a return address label!) and mail it with your check to: LPCA Membership, P.O. Box 100191, Arlington, VA 22201

Name _____

Address _____

Preferred phone _____

E-mail _____

May we add you to the community listserv? ☐ Yes ☐ No

Community Volunteer Interests (Check all that apply):

- ☐ Neighborhood Conservation
- ☐ Community Center and Park
- ☐ Development issues
- ☐ Social Events (Holiday Party, Halloween)
- ☐ Homes and Gardens Tour
- ☐ Spring Fair
- ☐ Traffic issues
- ☐ Newsletter
- ☐ Trees/Conservation
- ☐ All-purpose volunteer

Lyon Park Liberty

metromotor.com
P: (703) 528-8320



At Lyon Park Liberty,
air for your tires is
FREE!

**NOW
AVAILABLE!!!**

**VIRGINIA
STATE
INSPECTION**

50% off

Lyon Park Liberty welcomes all. We take pride in service; and our customers are our number one priority.

We offer services from general repair and maintenance to comprehensive diagnostics. Hours of operation are from 8:00 am - 5:00 pm Monday to Friday and 8:00 am - 2:00 pm Saturday. Stop on by to allow us to introduce ourselves and present this add to the Service Manager and receive 10% OFF ON REPAIRS.

Thank you for the continued welcoming into your community. We look forward in servicing all of your automotive needs.

Jay Harb, Service Manager
jay@metromotor.com
Metro Motor I Lyon Park Liberty
2717 North Pershing Dr.
Arlington, VA 22201



Beavers, Part 3!

Cindy Stroup

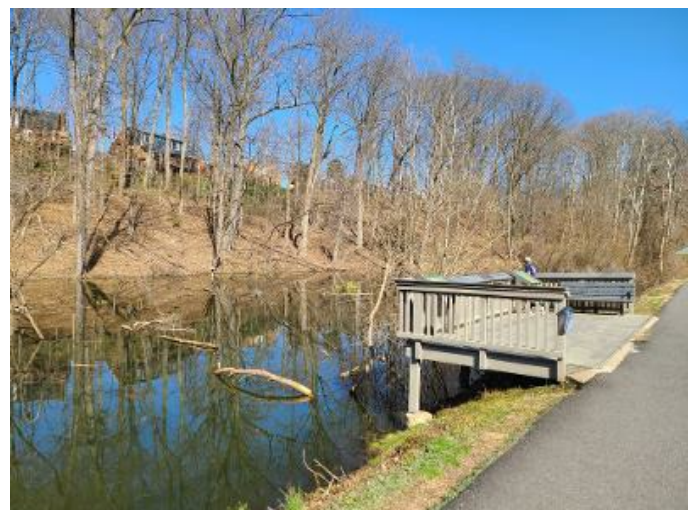
After seeing Ian Rowe's article on beavers in the February 2021 Lyon Park Newsletter and my follow up article in the March newsletter, fellow Lyon Parker Joe Englehardt reached out asking if Sparrow Pond still has beavers. Unfamiliar with that area, I took a walk down there. I was delighted to see what appears to be a beaver dam in the middle of the pond that could be occupied now, and another larger one that looks more abandoned. A number of felled trees in the pond have characteristic beaver tooth marks.

Lovely Sparrow Pond was built about 20 years ago as part of the County's wetland and stormwater remediation complex along the Washington and Old Dominion (W&OD) Trail between Route 50 and Columbia Pike. Before long, the pond filled with sediment and dried up. Then a beaver family moved in and built their dam which raised the water level by four or five feet, turning it back into a pond. The Arlington Regional Master Naturalists documented the beavers' activity in a 2020 article (<https://tinyurl.com/36c2wtv3>).

Sparrow Pond is a great place to take the kids to visit, or just enjoy a lovely afternoon outside. The lovely viewing platform has a bench where you can sit and watch for beavers, admire the ducks, and listen to birds chirp non-stop. Informative signs educate you about dragonflies, how wetlands clean water, and how they support wildlife, as do information sheets on Arlington's restoration plan for Sparrow Pond.

Because it is illegal to trap or move beavers, the County "hopes" that the beavers will relocate once construction begins. If they do, the County will install beaver baffles to keep them from returning. For the sake of children of all ages who love this spot of nature in the middle of Arlington, let's hope the beavers stay!

Sparrow Pond is next to the W&OD Trail, across the stream from the (unfenced) Glencarlyn Park dog area. Park at Glencarlyn Park (South Harrison Street) and follow the path to the W&OD trail. Driving from Lyon Park, head west on Route 50, turn left on Park Street, and park at the end. Take the short path to the W&OD Trail and turn left to the viewing deck, about a 5-minute saunter.



Keeping Your Home Green and Pet-Friendly

With spring right around the corner, making changes to your home décor is inevitable. You'll probably get this sudden urge to buy new house plants to spruce up the living room or bedroom and make it feel more alive. But you have one problem—your cat and dog digging up dirt and getting their paws and teeth in something they shouldn't. Have no fear! If you're looking for plants, pet safe options are available!

The Good Stuff

If you're longing to have your own tropical paradise, try buying areca or pony tail palms, bamboo plants, or even a money tree. Want a smaller plant? Maybe Boston ferns, moth orchids, bromeliads, or peperomia green will satisfy your needs. If you're like me, accidentally killing plants comes naturally, so plants that are easy to maintain are a must—succulents (i.e., haworthia, hens and chicks, echeveria) might be worth adding to your shopping list.

No matter the size, color, or pattern, you will find leafy friend that suits your taste while keeping your pets out of trouble.

The Bad Stuff

Just because something is popular doesn't mean it's safe for furry friends. Stay away from jade, aloe vera, lilies, dragon trees, purple heart plants, golden pothos, and poinsettias...the list goes on. In fact, it's so long it would take up a few pages.

It's important to read labels on potted plants so you know what you're buying. Some non-toxic plants look like toxic ones or might have deceptive names, the asparagus fern being a perfect example. An asparagus fern is actually a lily that's a fern look-alike—go figure! It's toxic to dogs and cats.

Helpful Resources – Do your Research

If you have a plant at home or looking to purchase one and you want to find out if it's safe to keep around, the American Society for the Prevention of Cruelty to Animals (ASPCA) is a fantastic place to start. The ASPCA has a long list of plants that are both toxic and non-toxic to cats, dogs, and even horses (<https://www.aspc.org/pet-care/animal-poison-control/toxic-and-non-toxic-plants>).

If you think your pet has nibbled on leaves and they don't seem to be doing too well, call your local veterinarian or the Animal Poison Control hotline ([888]-426-4435) right away.

Let's Go Shopping

Support your locally-owned interior plant nurseries (not limited to places listed below) or shop at larger chains, including The Home Depot and Lowe's:

- Greenstreet Gardens – Alexandria, VA
- Merrifield Garden Center – Falls Church, VA
- Oasis Landscaping – Sterling, VA

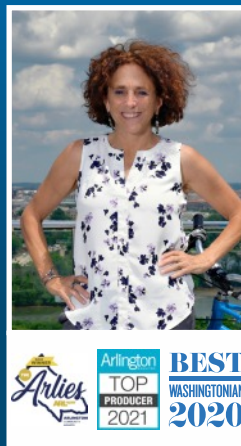
Wherever you decide to go, have some fun and may the plant nymphs be ever in your favor.

Peperomia happybean



© Can Stock Photo/richpav

Your Lyon Park & Ashton Heights Real Estate Expert



**Natalie U. Roy and the
Bicycling Realty Group (BRG)**
(30-year Lyon Park resident!)

We pride ourselves on delivering exceptional service to help our buyers and sellers realize their real estate goals.

Call Natalie Roy and the BRG today to request a complimentary home valuation report. We also offer biking house hunting tours, even during the winter. No bike? No worries, we have extras.

703-819-4915 (mobile)

www.bicyclingrealty.com

Licensed in VA, MD & DC

kw
KELLER WILLIAMS
REALTY

2101 Wilson Boulevard, #100 • Arlington, VA 22201
703-224-6000 (office)



Each Keller Williams Office is
independently owned and operated





3301 Wilson Blvd.
Walk-in and Virtual Visits

Monday-Friday: 8am-5pm
Weekends: 9am-2pm

703.522.1860

Hello Neighbor! Welcome to Immediate Care by PMA Health, part of a multi-specialty practice with four offices in Arlington and Falls Church. Our newest location is open in the heart of Clarendon for life's unexpected medical needs. Your care is our concern.

Check out all we have to offer at mypmahealth.com



Community Engagement Opportunities, Arlington Public Schools

All APS students who selected hybrid/in-person learning joined us in person as of mid-March.
We are delighted to have them back!

Monday, April 12 2 to 5 PM	Arlington Teen Summer Expo - Virtual Job Fair Register here: http://www.arlingtonteensummerexpo.com/
Monday, April 12 3 to 5 PM	Joint School Board/County Board Budget Work Session <i>Virtual</i>
Tuesday, April 15 7 to 9 PM	School Board Budget Work Session #1 with the Advisory Council on Teaching and Learning Watch School Board Work Sessions live online or on Comcast Channel 70 or Verizon Channel 41 Work sessions are open to the public, but no comments are accepted.
Tuesday, April 20 7 to 9 PM	School Board Budget Work Session #2 with the Advisory Council on Teaching and Learning Watch School Board Work Sessions live online or on Comcast Channel 70 or Verizon Channel 41 Work sessions are open to the public, but no comments are accepted.
Thursday, April 22 7 PM	School Board Meeting: School Year 2020-21 Update Watch School Board Work Sessions live online or on Comcast Channel 70 or Verizon Channel 41
Thursday, April 29 7 PM	School Board Meeting: Public Hearing on School Board's Proposed FY 2022 Budget. Watch School Board Work Sessions live online or on Comcast Channel 70 or Verizon Channel 41
Tuesday, May 4 6 to 8 PM	School Board Budget Work Session # 6. Watch School Board Work Sessions live online or on Comcast Channel 70 or Verizon Channel 41
Thursday, May 6 7 PM	School Board Meeting: Action on School Board's Proposed FY 2022 Budget Watch School Board Work Sessions live online or on Comcast Channel 70 or Verizon Channel 41

***View Board meetings live online or on Comcast Channel 70 or Verizon Channel 41.**

**** Watch Work Sessions live online at <https://www.apsva.us/school-board-meetings/school-board-work-sessions-meetings/>.**
Work sessions are opened to the public but no public comments are accepted.
Visit www.apsva.us/Engage to stay up-to-date on engagement opportunities.

Free flu shots. Call Arlington Public Health at 703-228-1200 for an appointment.

No-cost COVID-19 testing. Sites do not require insurance, ID or a doctor's referral. Free, walk-in clinic M-F 12-5 p.m. at Arlington Mill Community Center (909 S. Dinwiddie St.) Aurora Hills Community Center and Tucker Field at Barcroft Park sites offer electronic results within 72 hours.

Visit web (<https://health.arlingtonva.us/covid-19-coronavirus-updates/covid-19-testing/>) or call 703-912-7999 for information.

Real Estate Market Update

Whiffs of spring in the air. Putting on fewer than five layers to venture outside. Yes, we're getting ready to bid winter farewell. The longer days have sure come in handy, as we've been staying out late showing homes and writing offers. Our caffeine consumption is way up! The one-two punch of snow and ice storms bowed out to milder weather which allowed many homeowners to prepare their properties to go on the market. We're definitely observing increased inventory in the Coming Soon pipeline. The February data shows some stabilization in the months-of-supply metric and hopefully there will be an upward trend soon. We see three main factors behind this.

One, plain old **seasonality**. The school year drives the decision to move for many people. They get ready to sell several months before summer recess. 2021 should follow this pattern despite the COVID-related school disruptions.

Two, **vaccine availability**. More and more people are getting the shot, returning their lives back to normal (or at least to something less crazy). The safety of immunity makes it easier to plan major life decisions.

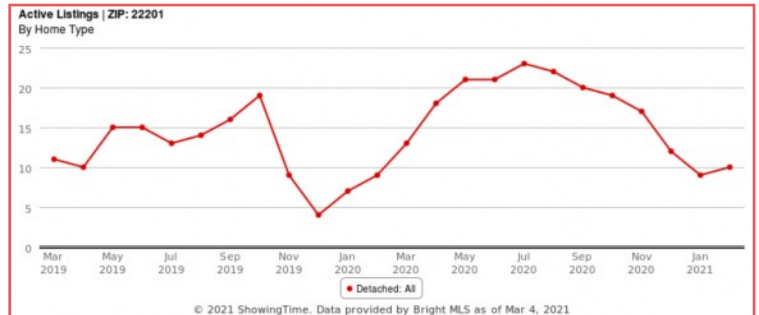
Three, **remote work policies**. Employers have realized that the post-COVID workplace will look different and are beginning to adjust. As permanent full or partial work-from-home options are rolled out, a long-distance move may finally be feasible for some.

The gist of it is this: buyers, don't despair! **More inventory is likely on the way**. Even though the competition will probably remain strong, at least the playing field should level out a little bit. And hopefully some moderation in the bidding wars as well, which have been raising alarms with policy makers.

Interest rates are contributing to buyer angst as well, as they are now up above 3% (and even worse for investment properties), but still below the 3.5% of last year. Analysts predict increasing rates--up to high 3's, throughout the year, especially in the second half of the year after the vaccine rollout. What may seem like a small increase in rates can have a big impact on your bottom line. For a \$300,000 30-year home loan, an increase of 1%, from 2.7% to 3.7%, would increase your monthly payment by \$164. Over the life of the same loan, that extra 1% would cost you an additional \$59,159 in interest

If we can help you think through your buying or selling strategy, give us a shout. As always, our team is here to help!

**Thinking of selling this year? Need more data to decide what's right for you?
Contact us for a no obligation conversation about your 2021 real estate goals!**



Katie Wethman, CPA, MBA, Realtor
Your Lyon Park Neighbor
Licensed in VA, DC, MD
Keller Williams Realty
(703) 655-7672
www.wethmangroup.com

Follow us: @wethmangroup
6820 Elm St, McLean VA 22101 | (703) 636-7300

